

## Eco-Balanced Bee Haven



Get tips from local  
Native Plant Society

Reduce chemical  
use

Like ones with neonicotinoids

## Easy Bee Habitat Set up

- Choose bee-safe house with overhang.
- Use easy-opening nesting tubes, reeds or trays to harvest bees. No bamboo or drilled wood.
- Place moist clayey-mud within 50 feet of the nest. The female uses mud to seal each egg chamber in her nesting hole.
- Harvest and clean cocoons for healthy bees next season. Easy to do for bee survivability.
- Overwinter cocoons in a refrigerator to ensure they thrive, not just survive for next season.
- Share your excess bees through BeeGAP to increase the bee population. Join at [www.crownbees.com/ngc-beegap](http://www.crownbees.com/ngc-beegap).



No drilled holes

Harvest cocoons

Increase Our Bee Population  
2-hours of your time yearly  
Protects our food supply

## About NGC BeeGAP Partner Crown Bees

Crown Bees, *The Gentle Bee Company*, has a broad reaching mission: to change the way we globally manage our bee pollinators—from the gardener level to commercial farms—to protect and sustain a healthy food supply.



In addition to the BeeGAP program, Crown Bees offers an informative website, bee-safe products, and monthly Bee-Mail for how to's.

## Get FREE Bee-Mail Tips

- Find out when to do what each month
- Learn about your gentle pollinators
- Increase bee success for healthy gardens
- Find out about bee harvesting

It's Free! Sign up for Bee-Mail at  
[www.crownbees.com/bee-mail](http://www.crownbees.com/bee-mail)



NGC BeeGAP is a Partnership Program with

  
**Crown Bees**  
The Gentle Bee Company

13410 NE 177th Place  
Woodinville, WA 98072  
[www.crownbees.com](http://www.crownbees.com)  
Email us: [info@crownbees.com](mailto:info@crownbees.com)  
Tel: 425.949.7954



National Garden Clubs, Inc.  
[www.gardenclub.org](http://www.gardenclub.org)

In partnership with

  
**Crown Bees**  
The Gentle Bee Company

# GARDENERS PROTECTING OUR FOOD SUPPLY



## How to Add More Gentle-Natured Mason Bees To Your Yard



### 5% Discount Coupon

Order Mason Bees & Bee Products  
[www.crownbees.com](http://www.crownbees.com)

At Checkout, Enter Coupon Code: **GCI**



# NGC BeeGAP Program

## Close the bee gap; Protect our food supply



### Bees Need You!

Our honey bees are in peril. Our food supply is threatened by loss of bee pollination. While scientists pursue answers, NGC members are coming together to close the bee gap with gentle mason bees. The NGC program, BeeGAP (Gardeners Adding Pollinators), is in partnership with Crown Bees, a gentle bee educator and product retailer for bee-safe products.



### Garden Solutions to Protect Food Supply

NGC BeeGAP offers garden solutions with far reaching results. By adding efficient pollinating mason bees to our gardens and yards, we change our perilous dependence on a single-bee pollinator; the honey bee. It's the first step to create multi-bee pollination to protect our food supply.

The gentle-natured mason bee, native to North America, is an excellent supplement to the troubled honey bee. The problem is we need more of them and other solitary bee pollinators.



When teamed with mason bees, honey bees are more efficient pollinators.

### Power of NGC BeeGAP

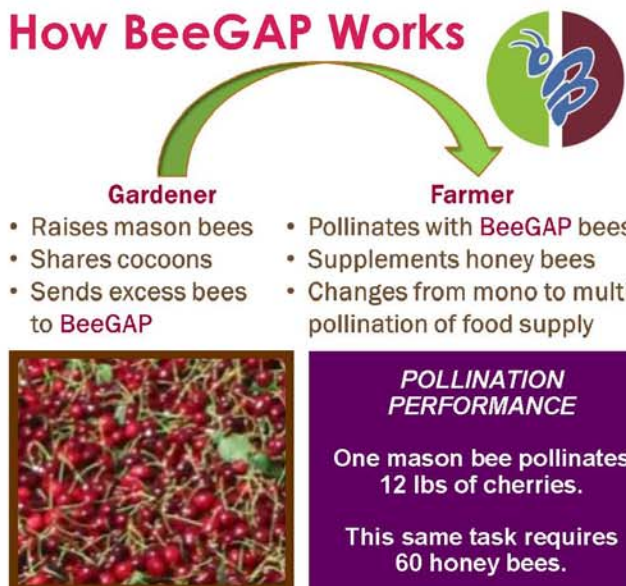
NGC members have a powerful voice to increase our solitary bee population and protect our food supply. Members can raise mason bees in their gardens, and can create community awareness about BeeGAP.

#### NGC BeeGAP Benefits from Crown Bees

- **Club Fund Raiser** discount on mason bee products
- **Member Savings** on bee products for the garden
- **Speakers Bureau:** Share the BeeGAP message with free presentation, speaker materials and handouts.
- **Bee BuyBack:** Send Crown Bees excess bees for products or cash. Bees are rehomed with gardeners and/or farmers. Ex: 1-cup of cocoons = about \$150.00.

Join NGC BeeGAP at [www.crownbees.com/ngc-beegap](http://www.crownbees.com/ngc-beegap). For more information about NGC BeeGAP, please contact your Region or State BeeGAP Chairman, or contact NGC BeeGAP Chairman, Debbie Skow at [d.sk.1159@gmail.com](mailto:d.sk.1159@gmail.com).

### How BeeGAP Works



### Miracle of Mason Bees

Mason bees are **solitary** bees with a gentle nature. They rarely sting and are highly efficient pollinators. Mason bees easily outperform honey bees since they gather pollen and nectar in the same flower visit. Sadly, they don't produce honey. Of the 4,000 species of bees in North America, 130+ of them are "cavity nesting" bees, like gentle mason bees.



Amazing Pollinators

Gentle, Rarely Sting

Healthy Garden Yields

Bee pollination produces quality fruit

### All Females Are Queens; Do All Activities

Mason bees don't have time to be aggressive. Each female is a queen. She performs all the activities from pollen and nectar gathering, to nest building and egg laying. In her 6-week lifetime, she can lay 20-35 eggs. This leaves no time for nest guarding.

If life-threatened, she may sting, although her sting is akin to a mosquito bite. Also, there's no anaphylactic shock like that of a honey bee sting.

Since these solitary pollinators work alone, there's little need to communicate. We think they learn from one another using a copycat mode. In contrast, social bees, like the honey bee, has one queen. They communicate and work as a team to defend the hive.